



we  
are  
water

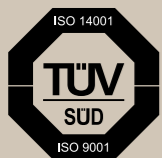


coffee

**Water for coffee**  
 It might seem absurd or exaggerated, but water, with its characteristics, preponderantly influences the result of the espresso, being that it comprises about 90% of its composition, not to mention in filter coffee, where it makes up 98% of it.



tw produces according to MOCA compliance food



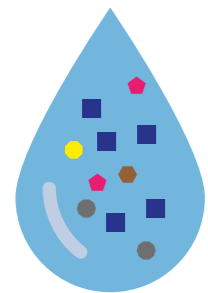
tw produces with quality ISO 9001:2015 and environmental ISO 14001:2015 management system certified by TÜV SÜD



# Not all water is the same



The use of unfiltered water not only affects the coffee you are preparing, but over time, it could potentially damage the precious coffee machine. Water with high carbonate hardness can cause the formation of limescale, while the high permanent hardness can generate chalk deposits.

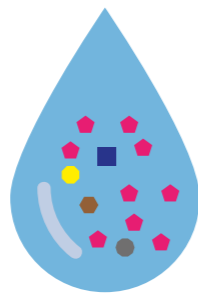


### Untreated water

Untreated water contains high levels of sediments and could damage or obstruct the machine.



- ZERO PROFESSIONAL



### Hard water

Hard water contains high levels of calcium and magnesium.



- OCRA
- ZERO PROFESSIONAL
- ADDOLCITORE COMPACT



### Soft water

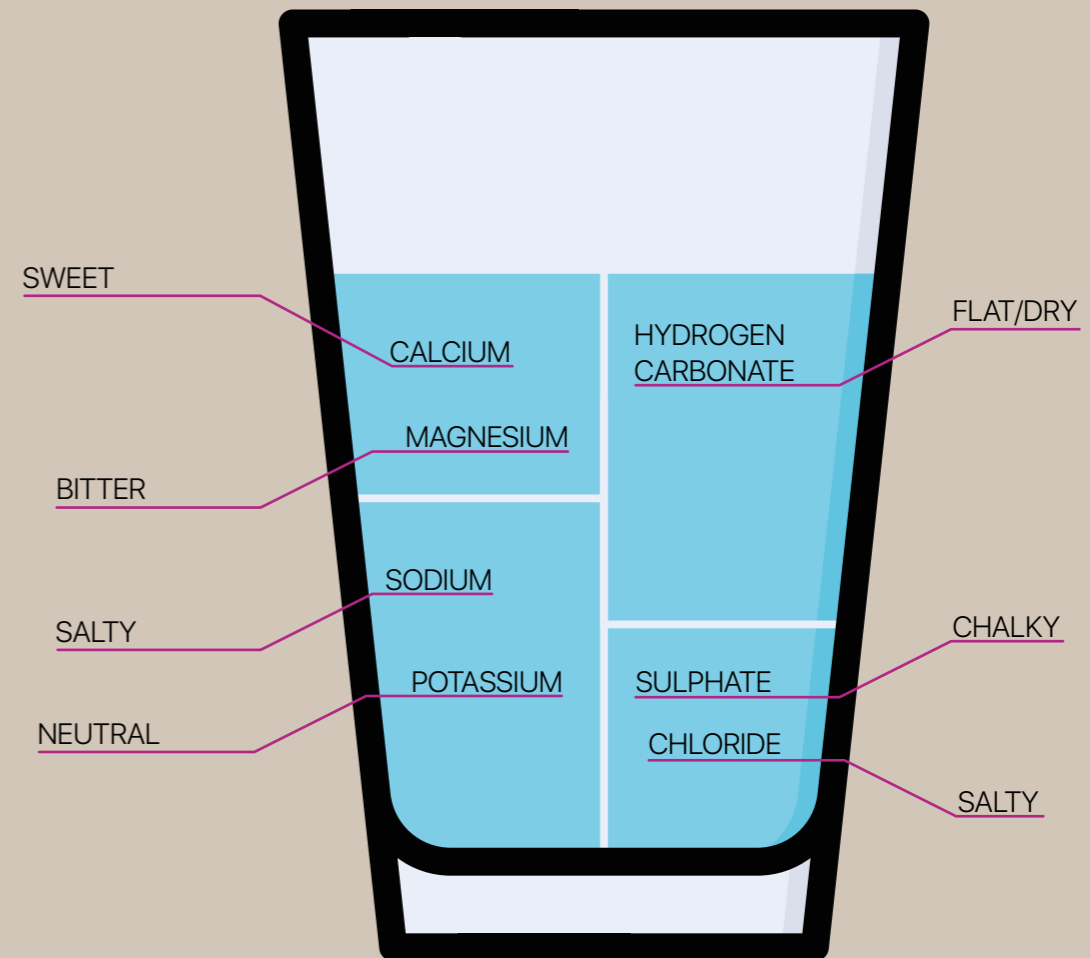
Soft water contains only small amounts of calcium, magnesium and carbonates.



- VIOLET
- LILAC
- ZERO PROFESSIONAL

# Improve the taste

Every element dissolved in the water transfers its own particular characteristic, soft, bitter, salty, and so forth. Finding the right blend of these substances creates the perfect recipe for obtaining the best possible product, enhancing the aromas and giving your drinks an attractive appearance. After all, water is the main ingredient of any drink.

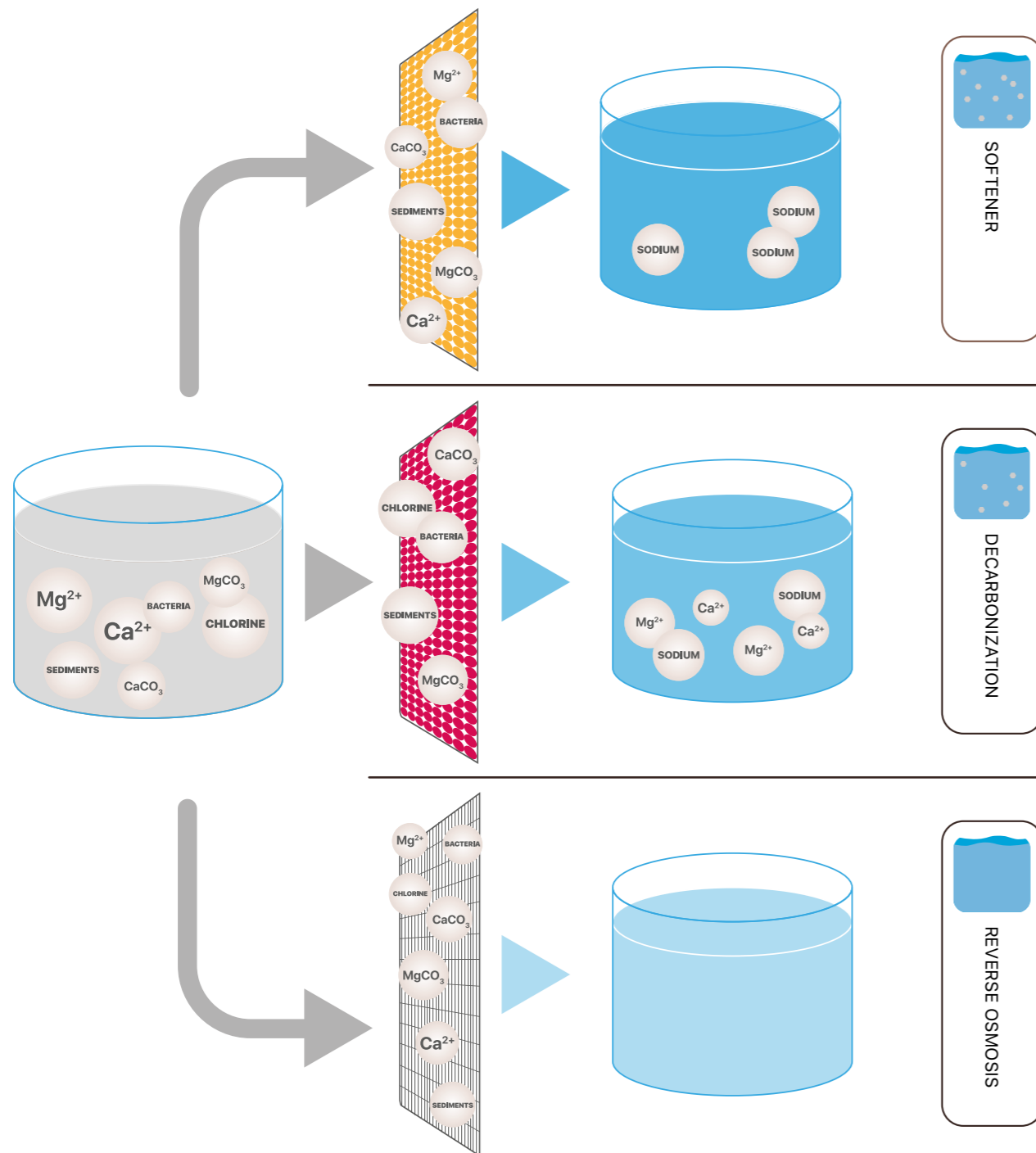


# Treatment is worth it

Mineral deposits, due to the hardness of the water, are the cause of malfunction of the machines. Maintenance times increase and so do management costs, in the long run, the damage caused becomes absolutely relevant. Untreated water also leaves residue on glasses and cutlery, giving an opaque look, and the impression that they are dirty. And who would want to drink a bad coffee from a dirty cup?



# Water treatment methods



Water treatment occurs mainly in three ways.

### Water softener

The result one obtains through the use of the water softener is the elimination of the calcium  $Ca^{2+}$  and magnesium  $Mg^{2+}$  ions, which are responsible for the hardness of the water. In this way, one effectively prevents the formation of build-up of limescale that over time reduces the performance of the machines and causes their breakdown.

### Decarbonization

The decarbonisation filters remove the carbonates of calcium  $CaCO_3$  and magnesium  $MgCO_3$ . The use of these filters allows you to obtain a triple result, protection of the machines, drinks with tastes that are richer and fuller, and sparkling clean glasses, dishes and cutlery.

### Reverse osmosis

Thanks to the very high degree of filtration that characterises reverse osmosis machines, it is possible to obtain water with very high quality characteristics. Passing through one or more membranes causes the water to be purified not only of the elements that determine its hardness, but also of all the contaminating substances, responsible, for example, of unwanted odours and flavours.



# 4 REASONS

## 01

---

Coffee has a rich flavour and creamy foam. It preserves intact all the nuances that distinguish the various blends, enhancing the sensory experience. Giving people one more reason to come back for more...

## 03

---

Incorrectly treated water almost always causes occlusions in pipes. The flow rate is reduced, annoying leaks can occur, the components are subjected to greater stress, and so are you.

## 02

---

Build-up adversely affects the energy consumption of the machines. The layer of limescale that forms around the resistors absorbs up to 30% of the heat produced, so the machine takes a longer time and requires more energy to reach and keep the optimum temperature. All of this translates into greater expenses.

## 04

---

If you do not intervene effectively, the accumulations of limescale end up irreparably damaging the machines, greatly increasing the operating costs and shortening their operating life. Good water extends its life.



**Profine<sup>®</sup>**  
*remove*

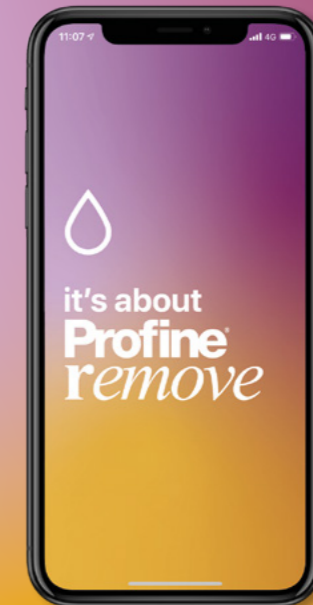


attuale spazio per testo --



## Obtain the maximum from your Profine<sup>®</sup> filters.

With the Profine<sup>®</sup> Remove App you can monitor and adjust every aspect related to the management of the Profine<sup>®</sup> Remove filters. You will learn how to adjust the bypass, if any, calculate autonomies, know the yield in cups or kg of coffee. Download it for free, the App is compatible with Android and iOS.



# Products

Water is the main ingredient, that magical liquid that transforms ground coffee into espresso. Have you ever tried using water that was too soft, as if it were distilled? We'd get an evanescent cream. And water that is too hard? Too bitter, and with unpleasant tastes! A water with the right ratio of calcium, magnesium and carbonates, manages to take the aromas we want from the coffee, bringing them to the cup, so that we can have the perfect espresso.



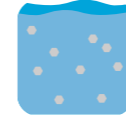
- ⊕ **OCRA** \_\_\_\_ p.8
- ⊕ **VIOLET** \_\_\_\_ p.10
- ⊕ **LILAC** \_\_\_\_ p.12
- ⊕ **BLUE** \_\_\_\_ p.14
- ⊕ **PFAS** \_\_\_\_ p.16
- ⊕ **ARSENIC** \_\_\_\_ p.18
- ⊕ **NITRATES** \_\_\_\_ p.20
- ⊕ **ZERO PROFESSIONAL** \_\_\_\_ p.22
- ⊕ **COMPACT** \_\_\_\_ p.24





# Profine® Ocra

## Total water hardness reduction.



decarbonize water

Profine® Ocra is the total water softener thanks to a specific resin. Widely appreciated for hotel and hospitality systems, as well as those for catering and coffee. It resolves build-up of at the root, preventing limescale deposits. Profine® Ocra provides protection and defends the systems. Equipped with Profine® Carbon Block, it also eliminates unwanted odours and flavours, reduces chlorine and has a bacteriostatic action.

- Eliminates unwanted odours and flavours
- Reduces chlorine
- Guarantees bacteriostatic action
- Reduces overall hardness
- Protects the systems and machines
- Is effective against limescale

CODE	DESCRIPTION	FLOW RATE	CAPACITY*
Y21415B-AYN	Ocra Small Profine®	1 L/min	Download the App Profine® Remove
Y21414B-AYK	Ocra Medium Profine®	1,5 L/min	
Y21413B-AYG	Ocra Large Profine®	2 L/min	
PBBC0201-B3D	BIG 2.0 Ocra Profine®	3 L/min	
PBBC0301-B3F	BIG 3.0 Ocra Profine®	4,5 L/min	
PBBC0451-B3H	BIG 4.5 Ocra Profine®	6,5 L/min	
PBBC0601-BBA	BIG 6.0 Ocra Profine®	9 L/min	

\* The capacities may vary according to the French degrees (° f) from the organoleptic properties and the flow rate of the incoming water.

Operating pressure Min. 2 - Max. 6 bar (0.2 - 0.6 Mpa)

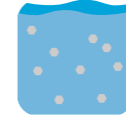
Temperature Min. 4 - Max. 30°C (40 - 86 °F)





# Profine® Violet

## Reduction of carbonates with pH control e microfiltration.



decarbonize water

Profine® Violet is part of the filtering line dedicated to the removal of temporary hardness. Widely appreciated for hotel and hospitality systems, as well as those for catering and coffee. It resolves build-up at the root, preventing limescale deposits as well as lowering the pH. Profine® Violet provides protection and defends the systems. Equipped with Profine® Carbon Block, it also eliminates unwanted odours and flavours, reduces chlorine and has a bacteriostatic action.

- Eliminates unwanted odours and flavours
- Reduces chlorine
- Guarantees bacteriostatic action
- Contains the lowering of the pH
- Reduces temporary hardness
- Protects the systems and machines
- Is effective against limescale

CODE	DESCRIPTION	FLOW RATE	CAPACITY*
Y21421B-AYW	Violet Small Profine®	1 L/min	Download the App Profine® Remove
Y21420B-AYV	Violet Medium Profine®	1,5 L/min	
Y21419B-AYU	Violet Large Profine®	2 L/min	
PBBVP200-B3R	BIG 2.0 Violet Profine®	2 L/min	
PBBVP300-B3S	BIG 3.0 Violet Profine®	2,5 L/min	
PBBVP450-B3U	BIG 4.5 Violet Profine®	3,5 L/min	
PBBVP600-B3V	BIG 6.0 Violet Profine®	4,5 L/min	

\* The capacities may vary according to the French degrees (° f) from the organoleptic properties and the flow rate of the incoming water.

Operating pressure Min. 2 - Max. 6 bar (0.2 - 0.6 Mpa)

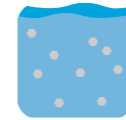
Temperature Min. 4 - Max. 30°C (40 - 86 °F)





# Profine® Lilac

## Reduction of carbonates and microfiltration .



decarbonize water

Profine® Lilac is the filtering line dedicated to the removal of temporary hardness. Widely appreciated for hotel and hospitality systems, as well as those for catering and coffee. It resolves build-up at the root, preventing limescale deposits. Profine® Lilac provides protection and defends the systems. Equipped with Profine® Carbon Block, it eliminates unwanted odours and flavours, reduces chlorine and has a bacteriostatic action.

- Eliminates unwanted odours and flavours
- Reduces chlorine
- Guarantees bacteriostatic action
- Reduces temporary hardness
- Protects the systems and machines
- Is effective against limescale

CODE	DESCRIPTION	FLOW RATE	CAPACITY*
Y21477B-B1D	Lilac Small Profine®	1 L/min	Download the App Profine® Remove
Y21478B-B1E	Lilac Medium Profine®	1,5 L/min	
Y21479B-B8P	Lilac Large Profine®	2 L/min	
PBBLP201-B3M	BIG 2.0 Lilac Profine®	2,5 L/min	
PBBLP301-B3N	BIG 3.0 Lilac Profine®	3 L/min	
PBBLP451-B3P	BIG 4.5 Lilac Profine®	4 L/min	
PBBLP601-B3Q	BIG 6.0 Lilac Profine®	5 L/min	

\* The capacities may vary according to the French degrees (° f) from the organoleptic properties and the flow rate of the incoming water.

Operating pressure Min. 2 - Max. 6 bar (0.2 - 0.6 Mpa)

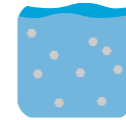
Temperature Min. 4 - Max. 30°C (40 - 86 °F)





# Profine® Blue

## Dechlorination and clarification drinking water.



microfiltered water

Profine® Blue, thanks to the Profine® Carbon Block technology, reduces and removes cloudiness present in the water, as well as chlorine and any tastes and smells. Nominal filtration degree 5 µm. Complies with DM 25/2012.

- Eliminates unwanted odours and flavours
- Reduces chlorine
- Reduces the cloudiness of the water
- Reduces the presence of any organic macromolecules

CODE	DESCRIPTION	FLOW RATE	CAPACITY*
Y21409B-AXW	Blue Small Profine®	3 L/min	15.000 L
Y21408B-AXT	Blue Medium Profine®	5 L/min	24.000 L
Y21407B-AXQ	Blue Large Profine®	7 L/min	45.000 L

\* The capacities may vary according to the French degrees (° f) from the organoleptic properties and the flow rate of the incoming water.

Operating pressure

Min. 2 - Max. 6 bar (0.2 - 0.6 Mpa)

Temperature

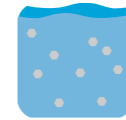
Min. 4 - Max. 30°C (40 - 86 °F)





# Profine® Pfas

## Filtration kit which removes pfas.



microfiltered water

Profine® PFAS removes unwanted odours and flavours, as well as Perfluoroalkylated substances (PFAS) Selective PFAS resin, final stage of 0.5 µm filtration with Profine® Carbon Block technology supplemented with silver ions for bacteriostatic action. To use with PFAS concentrations up to 500 ng/l.

- Eliminates unwanted odours and flavours and reduces chlorine
- Guarantees bacteriostatic action
- Reduces the concentration of PFAS

CODE	DESCRIPTION	FLOW RATE*	CAPACITY*
Y21488B-B1S	Kit Pfas Medium Profine®	2 L/min	11.000 L
Y21539B-B2M	Kit Pfas Medium Profine® con contaltri e senza rubinetto.	2 L/min	11.000 L
Y21486B-B1M	Pfas Medium Profine® **	2 L/min	-
Y21497B-B1X	Pfas Large Profine®	2 L/min	11.000 L
PBBPP200-B7Q	BIG 2.0 Pfas Profine®	2 L/min	11.000 L

\* To be used for waters with Pfas concentrations lower than 500 ng / l. The exchange capacities may vary according to the Pfas concentrations of the incoming water and the flow rates.

\*\* Can only be used for the replacement filter kit 2 pieces.

Operating pressure Min. 2 - Max. 6 bar (0.2 - 0.6 Mpa)

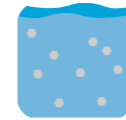
Temperature Min. 4 - Max. 30°C (40 - 86 °F)





# Profine® Arsenic

## Filter for removal of arsenic.



microfiltered water

Profine® Arsenic reduces the concentration of arsenic. Selective arsenic resin and final stage of 0.5 µm filtration with Profine® Carbon Block technology supplemented with silver ions for bacteriostatic action. To use with arsenic concentrations up to 50 µg/l.

- Eliminates unwanted odours and flavours and reduces chlorine
- Guarantees bacteriostatic action
- Reduces the concentration of arsenic

CODE	DESCRIPTION	FLOW RATE*	CAPACITY*
Y21518B-B27	Kit Arsenic Small Profine®	1 L/min	10.000 L
Y21430B-AZ6	Arsenic Small Profine®	1 L/min	10.000 L
Y21429B-AZ4	Arsenic Medium Profine®	1,5 L/min	15.000 L
Y21428B-AZ3	Arsenic Large Profine®	2 L/min	20.000 L
PBBRP200-B3W	BIG 2.0 Arsenic Profine®	2 L/min	22.000 L
PBBRP300-B3X	BIG 3.0 Arsenic Profine®	2 L/min	33.000 L
PBBRP450-B3Y	BIG 4.5 Arsenic Profine®	2 L/min	49.500 L
PBBRP600-B3Z	BIG 6.0 Arsenic Profine®	2 L/min	66.000 L

\* The capacities may vary according to the French degrees (° f) from the organoleptic properties and the flow rate of the incoming water.

Operating pressure

Min. 2 - Max. 6 bar (0.2 - 0.6 Mpa)

Temperature

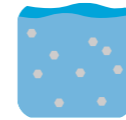
Min. 4 - Max. 30°C (40 - 86 °F)





# Profine® Nitrates

## Filter for removal of nitrates.



microfiltered water

Profine® Nitrates reduces the concentration of nitrates. Selective nitrates resin and final stage of 0.5 µm filtration with Profine® Carbon Block technology supplemented with silver ions for bacteriostatic action. To use with nitrates concentrations up to 50 mg/l.

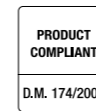
- Eliminates unwanted odours and flavours and reduces chlorine
- Guarantees bacteriostatic action
- Reduces the concentration of nitrates

CODE	DESCRIPTION	FLOW RATE*	CAPACITY*
Y21527B-B2C	Kit Nitrates Small Profine®	1 L/min	900 L
Y21443B-AZG	Nitrates Small Profine®	1 L/min	9000 L
Y21439B-AZE	Nitrates Medium Profine®	1,5 L/min	1.400 L
Y21438B-AZD	Nitrates Large Profine®	2,2 L/min	2.100 L

\* The capacities may vary according to the French degrees (° f) from the organoleptic properties and the flow rate of the incoming water.

Operating pressure Min. 2 - Max. 6 bar (0.2 - 0.6 Mpa)

Temperature Min. 4 - Max. 30°C (40 - 86 °F)





# Profine® Zero Professional

## Ultra-natural and super-filtering.



osmotic water

A hyperfiltration incredibly in harmony with nature. Because this new system of reverse osmosis has been devised while thinking about the natural forces that move water. Without the use of a pump and electricity, Zero Professional provides 3 litres of finely osmotised water per minute. Includes pre-treatment and post-treatment, mounting bracket and conductivity adjustment screw.

- High instantaneous flow rate
- Without requiring electrical energy
- Including active carbon and pre-treatment and post-treatment filters
- Integrated expansion tanks with patented functions
- Layout of the system that creates major savings in the water used
- Exclusive and compact design
- Integrated support bracket for horizontal and vertical mounting
- Conductivity adjustment screw

CODE	DESCRIPTION
OF80002000N-ALK	Profine® Zero Professional
Operating pressure	1,5 bar/6 bar   21.7 PSI/87 PSI
Temperature	Min. 4 - Max. 30°C (40 - 86 °F)
Hourly flow rate	24 l/h (4 bar)
Pre-Post filtration	Profine® Carbon Block 5 µm

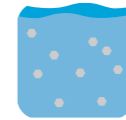






# Profine® Compact

Results in a small space.



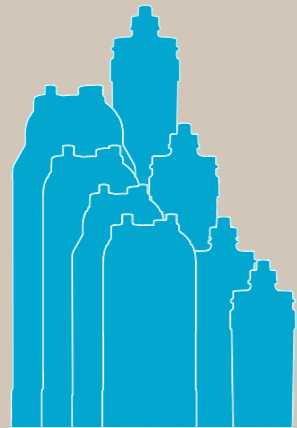
softened water

Compact and high-performance, our water softener ensures brilliant results and low costs. Perfectly dimensioned for small businesses, it is the ideal ally to always keep your equipment in order. Available also with the exclusive control system tw salt:detector. Say goodbye to build-up and haloes, say hello to brilliant results!

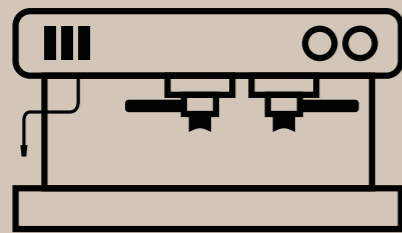
- Compact dimensions
- Large control display
- Volumetric
- Valve with integrated bypass
- Floating valve with safety device
- Salt level indicator min / max
- Compatible with tw salt:detector
- Key lock function

CODE	DESCRIPTION
8500833	New Softener Compact 5L
Capacity	30 m <sup>3</sup> /h
Connections	3/4"
Flow rate	0,25 mc/h
Strong cationic resin	5 liters
Dimensions	225 x 430 mm h 370 mm





Filters have a useful life and it is essential replace them at the right time. If you wait too long, the quality of the water decreases, leading to significant undesirable effects.



- ✗ Less intense and pleasant taste of drinks
- ✗ Increase in consumption and operating costs
- ✗ Damage to machinery
- ✗ Frequent machine maintenance
- ✗ Reduction of the useful life of the machines



Do you need support to choose the right solution? Our team can help you get the best results by operating together with you the most appropriate choices for your business.

Credits

Graphics: **tw** MKT Department

Keep in touch

- [facebook.com/profineitalia](https://facebook.com/profineitalia)
- [instagram.com/profine\\_italia](https://instagram.com/profine_italia)
- [youtube.com/profine cartridge](https://youtube.com/profine_cartridge)
- [linkedin.com/profine srl](https://linkedin.com/profine_srl)

#lifewithoutplastic



**thinkwater srl**  
Via delle Pezze 35  
35013 Cittadella PD  
Italy

info@thinkwater.com  
thinkwater.com

we  
are  
water



coffee